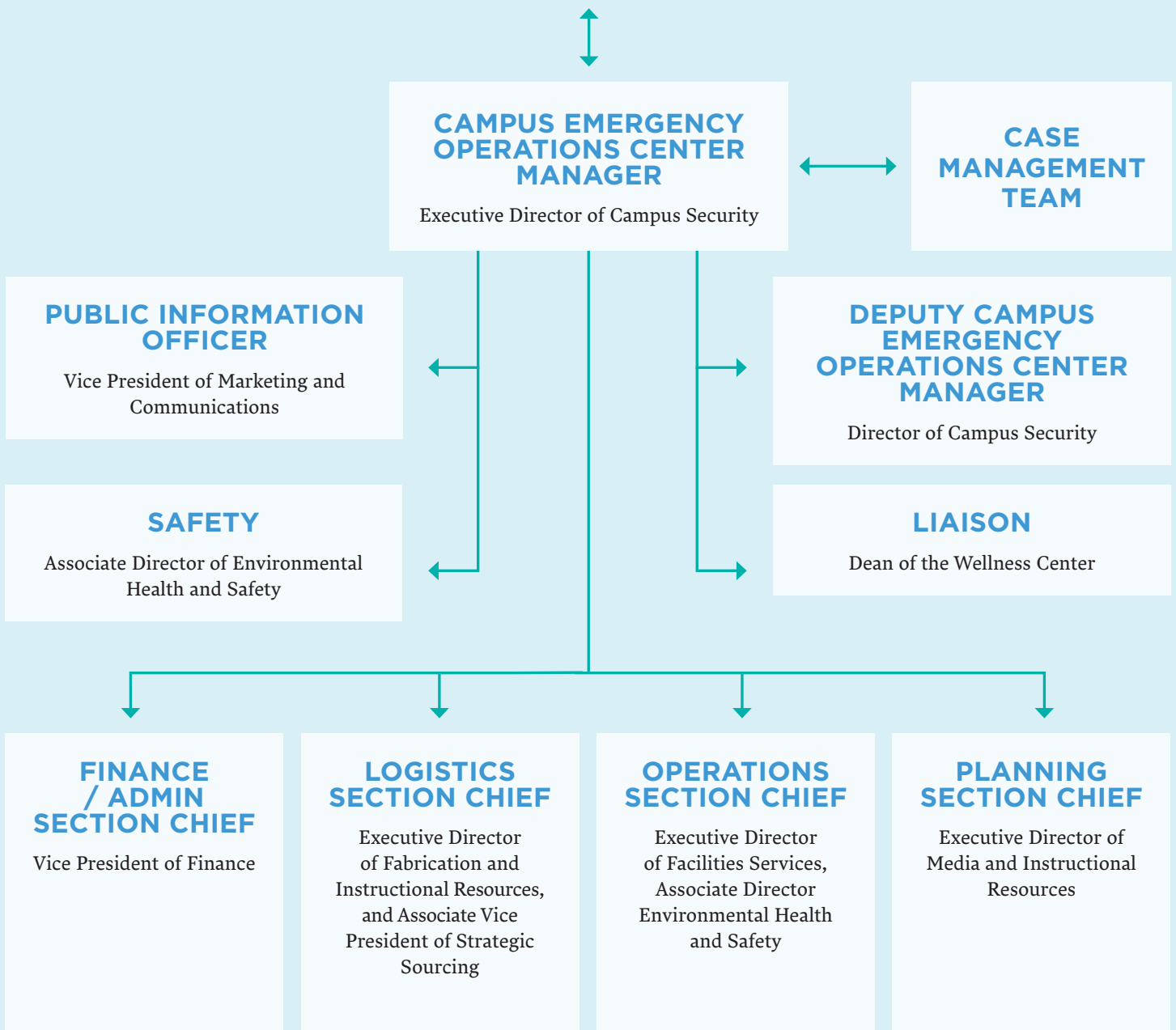


# CAMPUS EMERGENCY OPERATIONS PLAN CHART

## CAMPUS EMERGENCY OPERATIONS PLAN POLICY GROUP

Chief of Staff, Executive Vice President of Finance and Administration, Professor and Interim Undergraduate Dean, President, Vice President and Dean of Student Affairs, Interim Dean of Faculty, Executive Vice President, General Counsel, and Corporate Secretary, Provost and Senior Vice President of Academic Affairs, Chief Human Resources Officer, Vice President of Marketing and Communications, Vice President for Campus Operations, Graduate Dean, Vice President of Finance, Vice President of Educational Technologies and Chief Information Officer, Vice Provost and Dean of Community Engagement, Vice President of Enrollment Management



## OPERATIONS GROUP

### SAFETY

**Jerome Acks**  
Help Desk Manager

**Nina Andorf**  
Graphic Designer

**Olga Arango**  
Associate Director, Media  
Production and Design

**Joseph Behen**  
Dean, Wellness Center

**Michael Blackman**  
Assistant Dean, Student Affairs

**Kimberly Blaxton**  
Senior Talent Acquisition  
Specialist

**Efren Candelaria**  
Assistant Director,  
Facility Services

**Lauren Hogan Casser**  
Associate Dean, Continuing  
Studies

**Leigh Cole**  
Assistant Director,  
Instructional Facilities

**Andrew Falkowski**  
Assistant Professor

**Sarah Hicks**  
Executive Director,  
Facilities Services

**Alan Hooker**  
Manager, Employee  
Relations and Training

**Arthur Jackson**  
Director, Campus Security

**Brad Johns**  
Executive Director, Fabrication  
and Instructional Resources

**Dylan Jones**  
Instructional Facility Manager

**Jennifer Keats**  
Service Bureau Manager

**Debbie Martin**  
Dean, Student Life

**Michelle Maynard**  
Associate Director, Media and  
Instructional Resources

**Melissa Meyers**  
Associate Director,  
Environmental Health and Safety

**Adam Orcutt**  
Director, Digital Output  
Technologies

**Peter Oyler**  
Assistant Professor

**Fran Pleines**  
Director, Undergraduate  
Admissions

**Michael Pollard**  
Assistant Director, Facility  
Services

**David Raskin**  
Professor

**Robert Schlingmann**  
Assistant Director, Campus  
Services

**Megan Skarr**  
Director, Health Services

**Kevin Tracy**  
Media Center Manager

**Lisa Vinebaum**  
Associate Professor

**Amy Vogel**  
Associate Professor

**Jeff Ward**  
Special Assistant, Executive  
Communications

**Bree Witt**  
Director, Communications

### REMOTE LEARNING

**Gene Adams**  
Chief Information Officer

**Kathryn Burns**  
Institutional Research Analyst

**Tom Burtonwood**  
Faculty Advisor, Career and  
Co-Op and Assistant Professor

**Todd Chilton**  
Director, Educational  
Technology Advancement  
and Instructional Design

**Craig Downs**  
Executive Director, Media and  
Instructional Resources

**Melanie Emerson**  
Dean, Library and  
Special Collections

**Dawn Gavin**  
Dean, Undergraduate Studies

**Adam Greteman**  
Assistant Professor

**Paul Jackson**  
Associate Dean,  
Undergraduate Studies

**Brad Johns**  
Executive Director, Fabrication  
and Instructional Resources

**Linda Keane**  
Professor

**Dwayne Moser**  
Associate Dean, Graduate Studies

**Allie n Steve Mullen**  
Associate Professor, Adjunct

**Anna Ogier-Bloomer**  
Director, Curriculum Analysis  
and Planning and Lecturer

**Alexandra O'Keefe**  
Research and Instruction  
Librarian

**Jeff Panall**  
Associate Director,  
Systems Integration

**Devarajulu Ravichandran**  
Vice President, Educational  
Technologies and Chief  
Information Officer

**Mackenzie Salisbury**  
Information Literacy Librarian

**Jim TerMeer**  
Associate Professor

### INSTRUCTIONAL SUPPORT SPACES

**Tom Burtonwood**  
Faculty Advisor, Career and  
Co-Op and Assistant Professor

**Craig Downs**  
Executive Director, Media and  
Instructional Resources

**Melanie Emerson**  
Dean, Library and  
Special Collections

**Danny Floyd**  
Associate Gallery  
Technician and Lecturer

**Andy Hunter**  
Assistant Director,  
Sculpture Facilities

**Michelle Maynard**  
Associate Director, Media and  
Instructional Resources

**Alexandra O'Keefe**  
Research and Instruction  
Librarian

**Adam Orcutt**  
Director, Digital Output  
Technologies

**Leila Wilson**  
Coordinator, Writing Center and  
Associate Professor, Adjunct

### CAMPUS HOUSING AND FOOD SERVICE

**Michael Blackman**  
Assistant Dean, Student Affairs

**Efren Candelaria**  
Assistant Director,  
Facility Services

**Abigail Holcomb**  
Assistant Dean, Student  
Affairs for Residence Life

**Arthur Jackson**  
Director, Campus Security

**Melanie Lawson**  
Director, Residence Life

**Debbie Martin**  
Dean, Student Life

**Robert Schlingmann**  
Assistant Director,  
Campus Services

**Patrick Spence**  
Associate Dean, Student  
Affairs for Campus Life

### FACILITIES OPERATIONS

**Efren Candelaria**  
Assistant Director,  
Facility Services

**Sarah Hicks**  
Executive Director,  
Facilities Services

**Arthur Jackson**  
Director, Campus Security

**Ann Marie Martens**  
Assistant Director, Facilities,  
Graduate and Post-  
Baccalaureate Studios

**Melissa Meyers**  
Associate Director,  
Environmental Health and Safety

**Michael Pollard**  
Assistant Director,  
Facility Services

**Robert Schlingmann**  
Assistant Director, Campus  
Services

**Gretchen Talbot**  
Dean, Administration,  
Budget and Planning

**Quang Tran**  
Executive Director,  
Facilities Engineering

### EMPLOYEE CONSIDERATIONS

**Shelly Booker**  
Director, Talent Acquisition

**Miriam Braganza**  
Director, Finance

**Jane Brumitt**  
Executive Director,  
Enrollment Services

**Gaylene Burger**  
Assistant Controller

**Celeste Collins**  
Senior Administrative Director

**Craig Downs**  
Executive Director, Media and  
Instructional Resources

**Brian Esker**  
Vice President, Finance

**Allison Green**  
Chief of Staff

**Patrick James**  
Director, Student  
Financial Services

**Brad Johns**  
Executive Director, Fabrication  
and Instructional Resources

## OPERATIONS GROUP (CONTINUED)

**Melissa Meyers**  
Associate Director,  
Environmental Health and Safety

**Chris Murray**  
Controller

**Antoinette Murril**  
Director, Employee  
Relations and Training

**Mike Nicolai**  
Chief Human Resources Officer

**Eala Eilis Alice O'se**  
Resale Assistant Manager

**Rosalie Shemmer**  
Dean, Career and  
Professional Experience

**Gretchen Talbot**  
Dean, Administration,  
Budget and Planning

**Hiroko Yamamura**  
Executive Director, School  
Information Technologies

---

### REMOTE EVENTS

**Hannah Barco**  
Assistant Director,  
Department of Exhibitions

**Katie Brown**  
Associate Director, Events  
and On Campus

**Craig Downs**  
Executive Director,  
Media and Instructional  
Resources

**Sarah Gardner**  
Director, Marketing

**Dawn Gavin**  
Dean, Undergraduate Studies

**Mary C.K. Hayes**  
Director, Special Events  
and Donor Relations

**Marie Herwald Hermann**  
Assistant Professor

**Amy Honchell**  
Associate Provost,  
Academic Planning

**Mark Jeffery**  
Associate Professor

**Arnold J. Kemp**  
Dean, Graduate Studies

**Derek Kleckner**  
Director, Web Services

**Trevor Martin**  
Director, Exhibitions and  
Events and Senior Lecturer

**Alexandre McHenry**  
Director, Operational  
Application Services

**Frédéric Moffet**  
Associate Professor

**Tim Parsons**  
Associate Professor

**Lisa Schrag**  
Office Assistant

**Patrick Spence**  
Associate Dean, Student  
Affairs for Campus Life

**Jan Tichy**  
Associate Professor

---

### ACADEMIC CONCERNS

**Martin Berger**  
Provost and Senior Vice  
President, Academic Affairs

**Dawn Gavin**  
Dean, Undergraduate Studies

**Raja El Halwani**  
Professor

**Paul Jackson**  
Associate Dean,  
Undergraduate Studies

**Arnold J. Kemp**  
Dean, Graduate Studies

**Dwayne Moser**  
Associate Dean, Graduate Studies

**Jefferson Pinder**  
Interim Dean of Faculty

**Gretchen Talbot**  
Dean, Administration,  
Budget and Planning

**Elizabeth Wright**  
Chair of Faculty and  
Associate Professor

**Emilie Jane Yardley-Hodges**  
Executive Assistant to the Provost

## PLANNING GROUP

### TEACHING AND LEARNING

**Rebekah Champ**  
Assistant Dean,  
Academic Advising

**Delinda Collier**  
Associate Professor

**Isabel Garcia-Gonzales**  
Associate Director, Faculty  
Employment Services

**Hannah Hirsekorn**  
Instructional Facility Manager

**Paul Jackson**  
Associate Dean,  
Undergraduate Studies

**Eric Lebofsky**  
Senior Administrative  
Director and Lecturer

**Dwayne Moser**  
Associate Dean, Graduate Studies

**Anna Ogier-Bloomer**  
Director, Curriculum Analysis  
and Planning and Lecturer

**Lawrence Rodriguez**  
Director, International Affairs

**Mackenzie Salisbury**  
Information Literacy Librarian

**Kate Schutta**  
Director, Career and Professional  
Experience

**Rana Siegel**  
Senior Administrative Director

**Valerie St. Germain**  
Director, Disability and  
Learning Resource Center

**Elizabeth Wright**  
Chair of Faculty and  
Associate Professor

---

### STUDENT HEALTH AND FINANCIAL WELL-BEING

**Joseph Behen**  
Dean, Wellness Center

**Michael Blackman**  
Assistant Dean, Student Affairs

**Kevin Brown**  
Associate Director, Student  
Financial Services

**Jane Brumitt**  
Executive Director,  
Enrollment Services

**Cheeyon Cha**  
Director, Student Affairs,  
Korean and Chinese Advising

**Leigh Cole**  
Assistant Director,  
Instructional Facilities

**Abigail Holcomb**  
Assistant Dean, Student  
Affairs for Residence Life

**Patrick James**  
Director, Student  
Financial Services

**Sherman Lee**  
Associate Director,  
Financial Aid Processing

**Debbie Martin**  
Dean, Student Life

**Eala Eilis Alice O'se**  
Resale Assistant Manager

**Fran Pleines**  
Director, Undergraduate  
Admissions

**Megan Skarr**  
Director, Health Services

**Debra Stephens**  
Director, Collections and  
Student Insurance

**Jina Valentine**  
Associate Professor

**Katrina Valera**  
Director, Student Affairs,  
Diversity and Inclusion

---

### ON-CAMPUS HOUSING AND FOOD

**Michael Blackman**  
Assistant Dean,  
Student Affairs

**Jennifer Feulner**  
Manager, Strategic Sourcing

**Sarah Hicks**  
Executive Director,  
Facilities Services

**Abigail Holcomb**  
Assistant Dean, Student  
Affairs for Residence Life

**Arthur Jackson**  
Director, Campus Security

**Kye Kim**  
Instructional Facility Supervisor

**Laura Lamb**  
Director, Campus Life

**Melanie Lawson**  
Director, Residence Life

**Debbie Martin**  
Dean, Student Life

**Robert Schlingmann**  
Assistant Director, Campus  
Services

**Patrick Spence**  
Associate Dean, Student  
Affairs for Campus Life

---

### CAMPUS FACILITIES OPERATION AND SECURITY

**Efren Candelaria**  
Assistant Director,  
Facility Services

## PLANNING GROUP (CONTINUED)

**Holly Dankert**  
Research and Access  
Services Librarian

**Kazuki Guzman**  
Sullivan Fabrication Manager

**Sarah Hicks**  
Executive Director,  
Facilities Services

**Arthur Jackson**  
Director, Campus Security

**Melissa Meyers**  
Associate Director,  
Environmental Health and Safety

**Jeff Panall**  
Associate Director,  
Systems Integration

**Lauren Pirritano**  
Media Producer

**Michael Pollard**  
Assistant Director,  
Facility Services

**Patrick Spence**  
Associate Dean, Student  
Affairs for Campus Life

**Quang Tran**  
Executive Director,  
Facilities Engineering

---

### BUSINESS OPERATIONS AND EMPLOYEES

**Gene Adams**  
Chief Information Officer

**Deneige Barkley**  
Assistant Director,  
Student Affairs

**Shelly Booker**  
Director, Talent Acquisition

**Becky Borowicz**  
Senior Administrative Director

**Miriam Braganza**  
Director, Finance

**Lauren Hogan Casser**  
Associate Dean,  
Continuing Studies

**Celeste Collins**  
Senior Administrative Director

**Melanie Emerson**  
Dean, Library and  
Special Collections

**Sarah Gardner**  
Director, Marketing

**Laura Lamb**  
Director, Campus Life

**Catherine McCulloch**  
Assistant Director,  
Instructional Facilities

**Christy Miceli**  
Director, Registration  
and Records

**Steven Plaxco**  
Director, Exhibition Operations

**Mike Riordan**  
Associate Vice President,  
Strategic Sourcing

**Maryann Schaefer**  
Executive Director, Enrollment  
Marketing and Operations

**Rosalie Shemmer**  
Dean, Career and  
Professional Experience

**Gretchen Talbot**  
Dean, Administration,  
Budget and Planning

**Hiroko Yamamura**  
Executive Director, School  
Information Technologies

---

### INSTRUCTIONAL FACILITIES AND RESOURCES

**Jeff Armstrong**  
Senior Administrative Director

**Craig Downs**  
Executive Director, Media and  
Instructional Resources

**Robb Drinkwater**  
Manager, Sound Department  
Facilities and Associate  
Professor, Adjunct

**Dan Holmes**  
Associate Director, Technical  
Facilities, FVNMA

**Brad Johns**  
Executive Director, Fabrication  
and Instructional Resources

**Dylan Jones**  
Instructional Facility Manager

**Mayumi Lake**  
Associate Director, Photo  
Department Facilities  
and Senior Lecturer

**Abina Manning**  
Director, Video Data Bank

**Michelle Maynard**  
Associate Director, Media and  
Instructional Resources

**Adam Orcutt**  
Director, Digital Output  
Technologies

**Devarajulu Ravichandran**  
Vice President, Educational  
Technologies and Chief  
Information Officer

**April Sheridan**  
Special Collections Manager

**Lisa Stone**  
Roger Brown Collection  
Coordinator and Senior Lecturer